



DSL-300G/CV
ADSL Ethernet Modem
User's Guide

First Edition (December 2002)

Printed In Taiwan

Wichtige Sicherheitshinweise

1. Bitte lesen Sie sich diese Hinweise sorgfältig durch.
2. Heben Sie diese Anleitung für den spätem Gebrauch auf.
3. Vor jedem Reinigen ist das Gerät vom Stromnetz zu trennen. Verwenden Sie keine Flüssig- oder Aerosolreiniger. Am besten dient ein angefeuchtetes Tuch zur Reinigung.
4. Um eine Beschädigung des Gerätes zu vermeiden sollten Sie nur Zubehörteile verwenden, die vom Hersteller zugelassen sind.
5. Das Gerät ist vor Feuchtigkeit zu schützen.
6. Bei der Aufstellung des Gerätes ist auf stabilem Stand zu achten. Ein Kippen oder Fallen könnte Verletzungen hervorrufen. Verwenden Sie nur sichere Standorte und beachten Sie die Aufstellhinweise des Herstellers.
7. Die Belüftungsöffnungen dienen zur Luftzirkulation die das Gerät vor Überhitzung schützt. Sorgen Sie dafür, daß diese Öffnungen nicht abgedeckt werden.
8. Beachten Sie beim Anschluß an das Stromnetz die Anschlußwerte.
9. Die Netzanschlußsteckdose muß aus Gründen der elektrischen Sicherheit einen Schutzleiterkontakt haben.
10. Verlegen Sie die Netzanschlußleitung so, daß niemand darüber fallen kann. Es sollte auch nichts auf der Leitung abgestellt werden.
11. Alle Hinweise und Warnungen die sich am Geräten befinden sind zu beachten.
12. Wird das Gerät über einen längeren Zeitraum nicht benutzt, sollten Sie es vom Stromnetz trennen. Somit wird im Falle einer Überspannung eine Beschädigung vermieden.
13. Durch die Lüftungsöffnungen dürfen niemals Gegenstände oder Flüssigkeiten in das Gerät gelangen. Dies könnte einen Brand bzw. Elektrischen Schlag auslösen.
14. Öffnen Sie niemals das Gerät. Das Gerät darf aus Gründen der elektrischen Sicherheit nur von autorisiertem Servicepersonal geöffnet werden.
15. Wenn folgende Situationen auftreten ist das Gerät vom Stromnetz zu trennen und von einer qualifizierten Servicestelle zu überprüfen:
 - a – Netzkabel oder Netzstecker sind beschädigt.
 - b – Flüssigkeit ist in das Gerät eingedrungen.
 - c – Das Gerät war Feuchtigkeit ausgesetzt.
 - d – Wenn das Gerät nicht der Bedienungsanleitung entsprechend funktioniert oder Sie mit Hilfe dieser Anleitung keine Verbesserung erzielen.
 - e – Das Gerät ist gefallen und/oder das Gehäuse ist beschädigt.
 - f – Wenn das Gerät deutliche Anzeichen eines Defektes aufweist.
16. Bei Reparaturen dürfen nur Originalersatzteile bzw. den Originalteilen entsprechende Teile verwendet werden. Der Einsatz von ungeeigneten Ersatzteilen kann eine weitere Beschädigung hervorrufen.
17. Wenden Sie sich mit allen Fragen die Service und Reparatur betreffen an Ihren Servicepartner. Somit stellen Sie die Betriebssicherheit des Gerätes sicher.
18. Zum Netzanschluß dieses Gerätes ist eine geprüfte Leitung zu verwenden, Für einen Nennstrom bis 6A und einem Gerätegewicht größer 3kg ist eine Leitung nicht leichter als H05VV-F, 3G, 0.75mm² einzusetzen

Limited Warranty

Hardware:

D-LINK WARRANTS EACH OF ITS HARDWARE PRODUCTS TO BE FREE FROM DEFECTS IN WORKMANSHIP AND MATERIALS UNDER NORMAL USE AND SERVICE FOR A PERIOD COMMENCING ON THE DATE OF PURCHASE FROM D-LINK OR ITS AUTHORIZED RESELLER AND EXTENDING FOR THE LENGTH OF TIME STIPULATED BY THE AUTHORIZED RESELLER OR D-LINK BRANCH OFFICE NEAREST TO THE PLACE OF PURCHASE.

THIS WARRANTY APPLIES ON THE CONDITION THAT THE PRODUCT REGISTRATION CARD IS FILLED OUT AND RETURNED TO A D-LINK OFFICE WITHIN NINETY (90) DAYS OF PURCHASE. A LIST OF D-LINK OFFICES IS PROVIDED AT THE BACK OF THIS MANUAL, TOGETHER WITH A COPY OF THE REGISTRATION CARD.

IF THE PRODUCT PROVES DEFECTIVE WITHIN THE APPLICABLE WARRANTY PERIOD, D-LINK WILL PROVIDE REPAIR OR REPLACEMENT OF THE PRODUCT. D-LINK SHALL HAVE THE SOLE DISCRETION WHETHER TO REPAIR OR REPLACE, AND REPLACEMENT PRODUCT MAY BE NEW OR RECONDITIONED. REPLACEMENT PRODUCT SHALL BE OF EQUIVALENT OR BETTER SPECIFICATIONS, RELATIVE TO THE DEFECTIVE PRODUCT, BUT NEED NOT BE IDENTICAL. ANY PRODUCT OR PART REPAIRED BY D-LINK PURSUANT TO THIS WARRANTY SHALL HAVE A WARRANTY PERIOD OF NOT LESS THAN 90 DAYS, FROM DATE OF SUCH REPAIR, IRRESPECTIVE OF ANY EARLIER EXPIRATION OF ORIGINAL WARRANTY PERIOD. WHEN D-LINK PROVIDES REPLACEMENT, THEN THE DEFECTIVE PRODUCT BECOMES THE PROPERTY OF D-LINK.

WARRANTY SERVICE MAY BE OBTAINED BY CONTACTING A D-LINK OFFICE WITHIN THE APPLICABLE WARRANTY PERIOD, AND REQUESTING A RETURN MATERIAL AUTHORIZATION (RMA) NUMBER. IF A REGISTRATION CARD FOR THE PRODUCT IN QUESTION HAS NOT BEEN RETURNED TO D-LINK, THEN A PROOF OF PURCHASE (SUCH AS A COPY OF THE DATED PURCHASE INVOICE) MUST BE PROVIDED. IF PURCHASER'S CIRCUMSTANCES REQUIRE SPECIAL HANDLING OF WARRANTY CORRECTION, THEN AT THE TIME OF REQUESTING RMA NUMBER, PURCHASER MAY ALSO PROPOSE SPECIAL PROCEDURE AS MAY BE SUITABLE TO THE CASE.

AFTER AN RMA NUMBER IS ISSUED, THE DEFECTIVE PRODUCT MUST BE PACKAGED SECURELY IN THE ORIGINAL OR OTHER SUITABLE SHIPPING PACKAGE TO ENSURE THAT IT WILL NOT BE DAMAGED IN TRANSIT, AND THE RMA NUMBER MUST BE PROMINENTLY MARKED ON THE OUTSIDE OF THE PACKAGE. THE PACKAGE MUST BE MAILED OR OTHERWISE SHIPPED TO D-LINK WITH ALL COSTS OF MAILING/SHIPPING/INSURANCE PREPAID. D-LINK SHALL NEVER BE RESPONSIBLE FOR ANY SOFTWARE, FIRMWARE, INFORMATION, OR MEMORY DATA OF PURCHASER CONTAINED IN, STORED ON, OR INTEGRATED WITH ANY PRODUCT RETURNED TO D-LINK PURSUANT TO THIS WARRANTY.

ANY PACKAGE RETURNED TO D-LINK WITHOUT AN RMA NUMBER WILL BE REJECTED AND SHIPPED BACK TO PURCHASER AT PURCHASER'S EXPENSE, AND D-LINK RESERVES THE RIGHT IN SUCH A CASE TO LEVY A REASONABLE HANDLING CHARGE IN ADDITION MAILING OR SHIPPING COSTS.

Software:

WARRANTY SERVICE FOR SOFTWARE PRODUCTS MAY BE OBTAINED BY CONTACTING A D-LINK OFFICE WITHIN THE APPLICABLE WARRANTY PERIOD. A LIST OF D-LINK OFFICES IS PROVIDED AT THE BACK OF THIS MANUAL, TOGETHER WITH A COPY OF THE REGISTRATION CARD. IF A REGISTRATION CARD FOR THE PRODUCT IN QUESTION HAS NOT BEEN RETURNED TO A D-LINK OFFICE, THEN A PROOF OF PURCHASE (SUCH AS A COPY OF THE DATED PURCHASE INVOICE) MUST BE PROVIDED WHEN REQUESTING WARRANTY SERVICE. THE TERM "PURCHASE" IN THIS SOFTWARE WARRANTY REFERS TO THE PURCHASE TRANSACTION AND RESULTING LICENSE TO USE SUCH SOFTWARE.

D-LINK WARRANTS THAT ITS SOFTWARE PRODUCTS WILL PERFORM IN SUBSTANTIAL CONFORMANCE WITH THE APPLICABLE PRODUCT DOCUMENTATION PROVIDED BY D-LINK WITH SUCH SOFTWARE PRODUCT, FOR A PERIOD OF NINETY (90) DAYS FROM THE DATE OF PURCHASE FROM D-LINK OR ITS AUTHORIZED RESELLER. D-LINK WARRANTS THE MAGNETIC MEDIA, ON WHICH D-LINK PROVIDES ITS SOFTWARE PRODUCT, AGAINST FAILURE DURING THE SAME WARRANTY PERIOD. THIS WARRANTY APPLIES TO PURCHASED SOFTWARE, AND TO REPLACEMENT SOFTWARE PROVIDED BY D-LINK PURSUANT TO THIS WARRANTY, BUT SHALL NOT APPLY TO ANY UPDATE OR REPLACEMENT WHICH MAY BE PROVIDED FOR DOWNLOAD VIA THE INTERNET, OR TO ANY UPDATE WHICH MAY OTHERWISE BE PROVIDED FREE OF CHARGE.

D-LINK'S SOLE OBLIGATION UNDER THIS SOFTWARE WARRANTY SHALL BE TO REPLACE ANY DEFECTIVE SOFTWARE PRODUCT WITH PRODUCT WHICH SUBSTANTIALLY CONFORMS TO D-LINK'S APPLICABLE PRODUCT DOCUMENTATION. PURCHASER ASSUMES RESPONSIBILITY FOR THE SELECTION OF APPROPRIATE APPLICATION AND SYSTEM/PLATFORM SOFTWARE AND ASSOCIATED REFERENCE MATERIALS. D-LINK MAKES NO WARRANTY THAT ITS SOFTWARE PRODUCTS WILL WORK IN COMBINATION WITH ANY HARDWARE, OR ANY APPLICATION OR SYSTEM/PLATFORM SOFTWARE PRODUCT PROVIDED BY ANY THIRD PARTY, EXCEPTING ONLY SUCH PRODUCTS AS ARE EXPRESSLY REPRESENTED, IN D-LINK'S APPLICABLE PRODUCT DOCUMENTATION AS BEING COMPATIBLE. D-LINK'S OBLIGATION UNDER THIS WARRANTY SHALL BE A REASONABLE EFFORT TO PROVIDE COMPATIBILITY, BUT D-LINK SHALL HAVE NO OBLIGATION TO PROVIDE COMPATIBILITY WHEN THERE IS FAULT IN THE THIRD-PARTY HARDWARE OR SOFTWARE. D-LINK MAKES NO WARRANTY THAT OPERATION OF ITS SOFTWARE PRODUCTS WILL BE UNINTERRUPTED OR ABSOLUTELY ERROR-FREE, AND NO WARRANTY THAT ALL DEFECTS IN THE SOFTWARE PRODUCT, WITHIN OR WITHOUT THE SCOPE OF D-LINK'S APPLICABLE PRODUCT DOCUMENTATION, WILL BE CORRECTED.

D-Link Offices for Registration and Warranty Service

THE PRODUCT'S REGISTRATION CARD, PROVIDED AT THE BACK OF THIS MANUAL, MUST BE SENT TO A D-LINK OFFICE. TO OBTAIN AN RMA NUMBER FOR WARRANTY SERVICE AS TO A HARDWARE PRODUCT, OR TO OBTAIN WARRANTY SERVICE AS TO A SOFTWARE PRODUCT, CONTACT THE D-LINK OFFICE NEAREST YOU. AN ADDRESS/TELEPHONE/FAX/E-MAIL/WEB SITE LIST OF D-LINK OFFICES IS PROVIDED IN THE BACK OF THIS MANUAL.

LIMITATION OF WARRANTIES

IF THE D-LINK PRODUCT DOES NOT OPERATE AS WARRANTED ABOVE, THE CUSTOMER'S SOLE REMEDY SHALL BE, AT D-LINK'S OPTION, REPAIR OR REPLACEMENT. THE FOREGOING WARRANTIES AND REMEDIES ARE EXCLUSIVE AND ARE IN LIEU OF ALL OTHER WARRANTIES, EXPRESSED OR IMPLIED, EITHER IN FACT OR BY OPERATION OF LAW, STATUTORY OR OTHERWISE, INCLUDING WARRANTIES OF MERCHANTABILITY AND FITNESS FOR A PARTICULAR PURPOSE. D-LINK NEITHER ASSUMES NOR AUTHORIZES ANY OTHER PERSON TO ASSUME FOR IT ANY OTHER LIABILITY IN CONNECTION WITH THE SALE, INSTALLATION MAINTENANCE OR USE OF D-LINK'S PRODUCTS

D-LINK SHALL NOT BE LIABLE UNDER THIS WARRANTY IF ITS TESTING AND EXAMINATION DISCLOSE THAT THE ALLEGED DEFECT IN THE PRODUCT DOES NOT EXIST OR WAS CAUSED BY THE CUSTOMER'S OR ANY THIRD PERSON'S MISUSE, NEGLIGENCE, IMPROPER INSTALLATION OR TESTING, UNAUTHORIZED ATTEMPTS TO REPAIR, OR ANY OTHER CAUSE BEYOND THE RANGE OF THE INTENDED USE, OR BY ACCIDENT, FIRE, LIGHTNING OR OTHER HAZARD.

LIMITATION OF LIABILITY

IN NO EVENT WILL D-LINK BE LIABLE FOR ANY DAMAGES, INCLUDING LOSS OF DATA, LOSS OF PROFITS, COST OF COVER OR OTHER INCIDENTAL, CONSEQUENTIAL OR INDIRECT DAMAGES ARISING OUT THE INSTALLATION, MAINTENANCE, USE, PERFORMANCE, FAILURE OR INTERRUPTION OF A D- LINK PRODUCT, HOWEVER CAUSED AND ON ANY THEORY OF LIABILITY. THIS LIMITATION WILL APPLY EVEN IF D-LINK HAS BEEN ADVISED OF THE POSSIBILITY OF SUCH DAMAGE.

IF YOU PURCHASED A D-LINK PRODUCT IN THE UNITED STATES, SOME STATES DO NOT ALLOW THE LIMITATION OR EXCLUSION OF LIABILITY FOR INCIDENTAL OR CONSEQUENTIAL DAMAGES, SO THE ABOVE LIMITATION MAY NOT APPLY TO YOU.

Trademarks

Copyright ©2000 D-Link Corporation.

Contents subject to change without prior notice.

D-Link is a registered trademark of D-Link Corporation/D-Link Systems, Inc.

All other trademarks belong to their respective proprietors.

Copyright Statement

No part of this publication may be reproduced in any form or by any means or used to make any derivative such as translation, transformation, or adaptation without permission from D-Link Corporation/D-Link Systems Inc., as stipulated by the United States Copyright Act of 1976.

TABLE OF CONTENTS

ABOUT THIS USER'S GUIDE.....	III
<i>Before You Start</i>	<i>iii</i>
INTRODUCTION.....	1
What is ADSL?	1
MODEM DESCRIPTION AND OPERATION	1
MODEM FEATURES.....	1
<i>Front Panel</i>	2
<i>Rear Panel</i>	2
<i>LED Indicators</i>	3
<i>Packing List</i>	3
HARDWARE INSTALLATION.....	4
CONNECT ADSL LINE	4
PC TO MODEM CONNECTION	5
SOFTWARE INSTALLATION	5
INSTALL THE MODEM CONFIGURATION UTILITY	5
CONFIGURE THE MODEM	8
MODEM DIAGNOSTICS	10
<i>Advanced Diagnostics</i>	11
FACTORY RESET	12
TECHNICAL SPECIFICATIONS	13
DSL-300G FIRMWARE UPGRADE UTILITY.....	14

About This User's Guide

This user's guide provides instructions on how to install the DSL-300G ADSL Modem and use it to connect a computer (or two computers) to the Internet.

If you are using a computer with a functioning Ethernet port, you can use the Quick Installation Guide to quickly establish your ADSL connection and access the Internet.

Terminology

This document uses the terms "Modem" (first letter upper case) to refer specifically to the DSL-300G ADSL Modem, and "modem" (first letter lower case) to refer to all such devices including the DSL-300G. ADSL service is provided by different types of businesses including telephone service providers, Internet service providers and other businesses that provide computer network and telecommunications services. The term "service provider" is used in this guide to refer to any service that sells or leases DSL services and equipment.

Before You Start

Please read and make sure you understand all the prerequisites for proper installation of your new Modem. Have all the necessary information and equipment on hand before beginning the installation.

Low Pass Filters

ADSL and telephone services share the same copper wire to carry their respective signals, a filtering mechanism may be necessary to avoid mutual interference. It may be necessary to install a low pass filter device (also called micro-filter or splitter) for each telephone that shares the line with the ADSL line. Micro-filters are easy to install passive devices that connect to the ADSL device and/or telephone using standard telephone cable. Ask your service provider for more information about the use of low pass filters with your installation.

VPI and VCI Settings

For some installations, it will be necessary to configure certain settings used by the Modem for connection to the Internet. If your Modem has not already been configured to the specific requirements of your ADSL account, you will have to change these settings using the Configuration Utility software included with the device.

If necessary, your service provider will provide two numbers, a Virtual Path Identifier (VPI) and a Virtual Channel Identifier (VCI) that are needed for proper configuration of the Modem. These numbers are used to manage the service provider's network infrastructure.

Introduction

This section provides a brief description of the Modem, its associated technologies and a list of Modem features.

What is ADSL?

Asymmetric Digital Subscriber Line (ADSL) is an access technology that utilizes ordinary copper telephone lines to enable broadband high-speed digital data transmission and interactive multimedia applications for business and residential customers. For ADSL services, it is not necessary expensive new cabling or condition the line in any way.

ADSL greatly increases the signal carrying capacity of copper telephone lines without interfering with regular telephone services. For the ADSL user, this means faster downloads and more reliable connectivity. ADSL devices make it possible to enjoy benefits such as high-speed Internet access without experiencing any loss of quality or disruption of voice/fax telephone capabilities.

ADSL provides a dedicated service over a single telephone line operating at speeds of up to 8 Mbps downstream and up to 640 Kbps upstream, depending on local telephone line conditions. A secure point-to-point connection is established between the user and the central office of the service provider.

D-Link ADSL devices incorporate the recommendations of the ADSL Forum regarding framing, data format, and upper layer protocols.

Modem Description and Operation

The DSL-300G ADSL Ethernet Modem is easy to install and use. You can use the Modem to connect any computer with a functioning Ethernet interface.

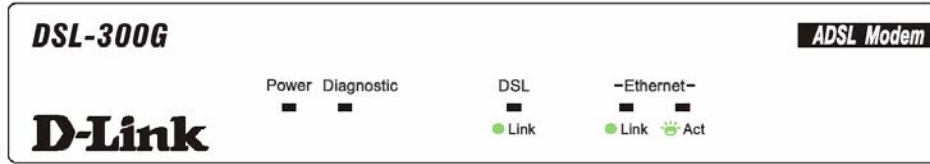
Modem Features

The DSL-300G ADSL Ethernet Modem utilizes the latest ADSL enhancements to provide a reliable Internet portal suitable for most small to medium sized offices. DSL-300G advantages include:

- Quick and easy installation with a user friendly GUI for configuration and management
- High data transfer rates; up to 8 Mbps downstream and up to 640 Kbps upstream
- DSLAM interoperability; the auto-detect function automatically selects the correct connection type during the initialization process
- MIB Support; built-in MIBs allow SNMP management functions
- Bridged Ethernet over ATM support; the DSL-300G supports RFC 2684 (also RFC 1483)
- Upgradable firmware using TFTP

Front Panel

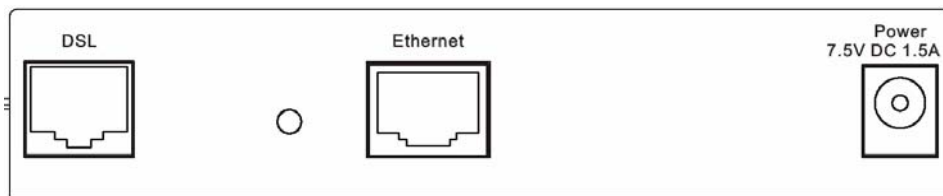
Place the Modem in a location that allows a view of the LED indicators on the front panel.



Front Panel

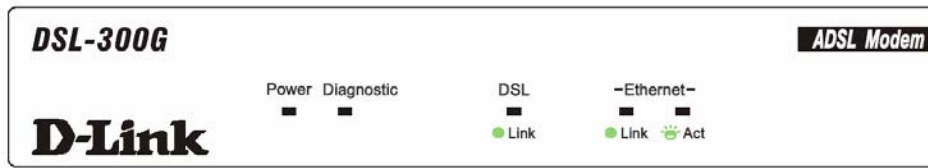
Rear Panel

All cable connections to the Modem are made at the rear panel. The power switch and factory reset button is located here as well.



Rear Panel

LED Indicators



LED Indicators

The LED Indicators read as follows:

POST: Turn On the device, all Lights will go ON for the duration of the test and then go OFF.

Power: Steady green light indicates the unit is powered on.

Status: Lights steady green during the ADSL negotiation phase. Once the connection status has been settled, the light will blink green.

ADSL: Link Steady green light indicates a valid ADSL connection. This will light after the ADSL negotiation process has been settled.

Ethernet: Link Steady green light indicates a valid Ethernet connection.

Ethernet: Act Blinking green indicates an active Ethernet session.

Packing List

Open the shipping carton and carefully remove all items. In addition to this User's Guide, ascertain that you have:

1. One DSL-300G ADSL Ethernet Modem
2. One DSL-300G tool kit on CD-ROM containing The User's Guide, the DSL- 300G Family Configuration Utility and the DSL-300G Family Firmware Upgrade Utility
3. One twisted-pair telephone cable used for ADSL connection
4. One straight-through Ethernet cable
5. One AC power adapter suitable for your electric service

Hardware Installation

In this chapter you will learn about the various connections you will need to make in order to use the Modem.

When selecting the location for the Modem be sure to allow room to access the connections on the rear panel. You will want to place the Modem so that you will be able to see the LED indicators on the front panel. Allow some space above the Modem for ventilation to avoid problems with overheating.

Connect ADSL Line

You can use the twisted-pair ADSL (telephone) cable included with the Modem to connect to your telephone line. Simply plug one end of the cable into the ADSL port (RJ-11 receptacle) on the rear panel of the Modem and insert the other end into the wall jack.

Connect Ethernet LAN to Modem

The Modem may be connected to any 10/100BASE-TX Ethernet LAN. Any connection to an Ethernet concentrating device such as a switch or hub must operate at a speed of 10/100 Mbps only. When connecting the Modem to any Ethernet device that is capable of operating at speeds higher than 10Mbps, be sure that the device has auto-negotiation (NWay) enabled for the connecting port.

Use standard twisted-pair cable with RJ-45 connectors. The RJ-45 port on the Modem is a crossed port (MDI-X). Follow standard Ethernet guidelines when deciding what type of cable to use to make this connection. When connecting the Modem directly to a PC or server use a normal straight-through cable. You should use a crossed cable when connecting the Modem to a normal (MDI-X) port on a switch or hub. Use a normal straight-through cable when connecting it to an uplink (MDI-II) port on a hub or switch. A valid connection will be indicated by the Ethernet Link LED indicator.

The rules governing Ethernet cable lengths apply to the LAN to Modem connection. Be sure that the cable connecting the LAN to the Modem does not exceed 100 meters.

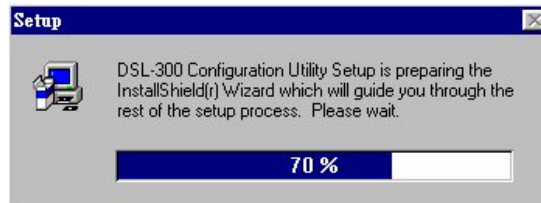
Software Installation

In order to install the software driver for the Modem, you first need to install the *DSL-300G Configuration Utility*, D-Link's GUI based management software. This software can later be used to monitor the device or change its settings. Install the Configuration Utility software on the PC directly connected to the device using the Ethernet interface.

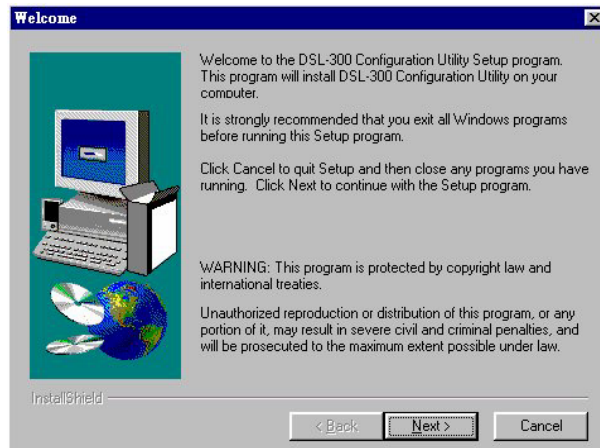
Install the Modem Configuration Utility

Install the Configuration Utility software by inserting the setup CD-ROM disc into your CD-ROM drive and wait for the following screen prompts to appear:

1. The *Setup* window informs you that it is preparing the "InstallShield Wizard".



2. The *Welcome* window recommends exiting all other programs before starting the setup procedure. If you do not wish to close other programs click Cancel, otherwise quit all other programs and click **Next**.



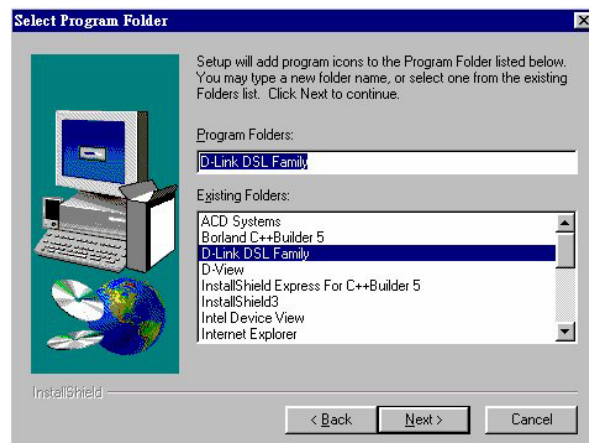
3. The *User Information* window asks you for your name and company name. Enter this information in the appropriate field and click **Next**.



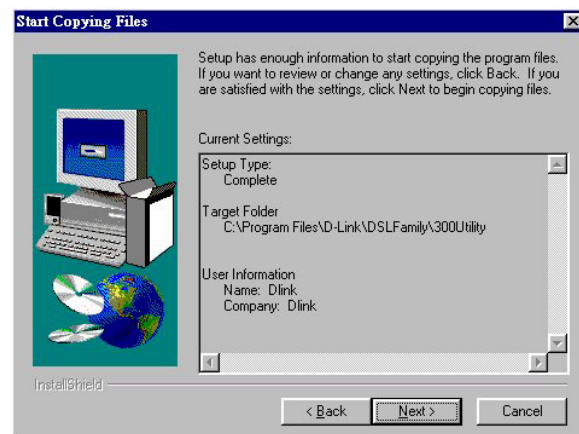
- In the *Choose Destination Location* window you may accept to install the Configuration Utility in the automatically chosen directory by clicking **Next**. Or you can click **Browse** if you wish to select a different directory.



- The *Select Program Folder* window asks you to select a different folder or you can rename the D-Link DSL Family folder that has been created for the program icon. You can rename the folder by typing in a new name in the "Program Folder:" field. Click **Next** to continue.



- The *Start Copying Files* window provides an opportunity to review the information you have just entered. If you are satisfied with the information as it is listed, click **Next**. If you need to change any of the information click **Back** to go to the previous window(s) to make the changes.



7. In the *Setup Complete* window you are presented with the option to launch the Configuration Utility program. If you wish to start the program now, click in the vacant box next to the “Yes, Launch the program file” option. A check mark (✓) should appear in the box indicating it has been selected. Click **Finish** to launch the Configuration Utility.



A Configuration Utility icon should now be seen on your desktop screen.

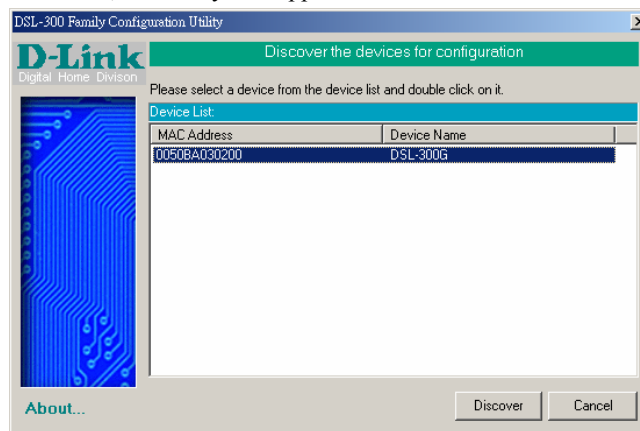
Configure the Modem

With the Configuration Utility software installed, you are ready to configure the Modem. You must enter the VPI and VCI values that have been given to you by your ADSL service provider to define the path of connection to the ATM network backbone.

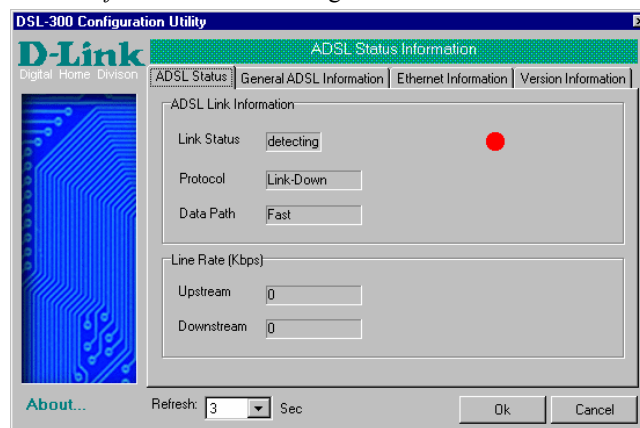


Click the **Configuration Utility** icon to initiate the configuration of the Modem. The Configuration Utility will locate the Modem on your LAN.

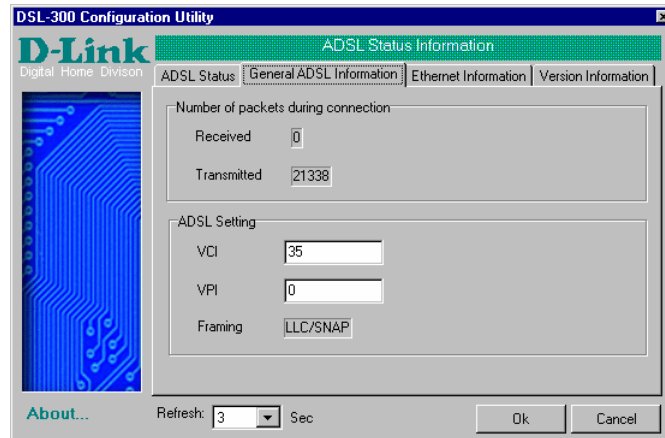
1. If the DSL-300G and corresponding MAC address does not appear in the *Device List* of the *Configuration Utility* window, click the **Discover** button on the bottom of the window. The DSL-300G should appear in the *Device Name* column preceded by the *MAC Address* of the device. If there are other DSL-300G Family Modems on the same network, these may also appear in the list.



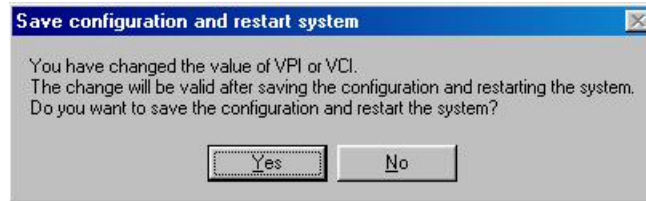
2. Double-click on the Modem in the list or highlight it and depress the Enter key. The main menu appears, click on the *General ADSL Information* tab to configure the Modem.



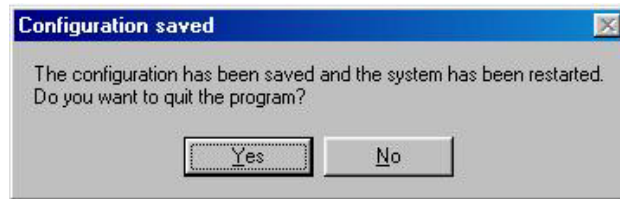
- In the new window you must enter the *VPI* and *VCI* numbers (assigned to you by your service provider). Type in these numbers in the *ADSL Setting* field and click **Finish**.



- The *Save configuration and restart system* window will appear. You will be asked if you would like to save the changes you have made (the VPI and VCI numbers) and restart the Modem. Click **Yes** if you have correctly entered the necessary information.



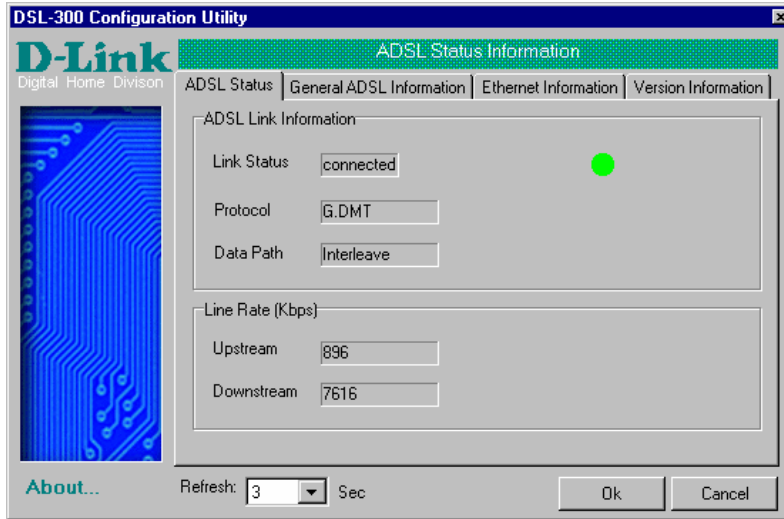
- The final window, *Configuration saved*, confirms that you have made changes to the configuration of the Modem and restarted it. If you wish to close the Configuration Utility, click **Yes**.



1.

Modem Diagnostics

The Configuration Utility can be used to monitor the activity and performance of the Modem. The four status windows are read-only with the exception of the General ADSL Information. Once you have set the VCI and VPI values there should not be any need to change them. You can choose the interval in which the statistics are refreshed from the pull-down menu on the bottom of the window.

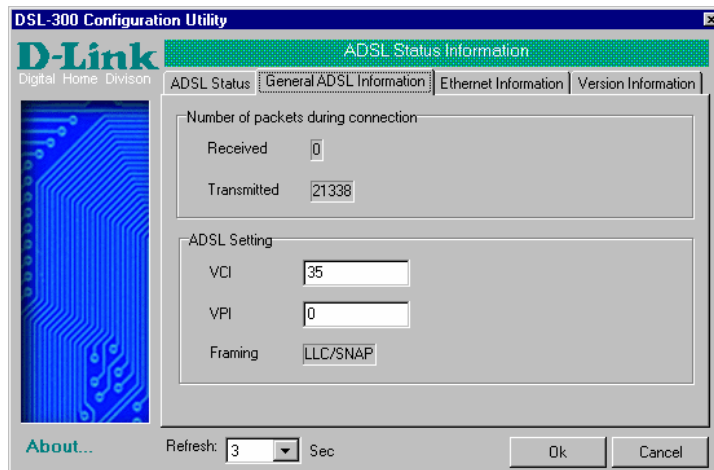


Clicking on the *ADSL Status* tab provides information about the status of the ADSL link and the data. In this window you can view the following information:

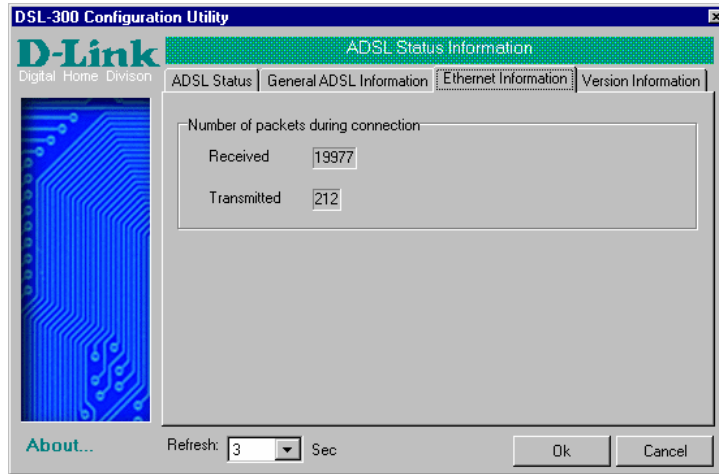
- ◆ **Link Status** – current status of the ADSL link
- ◆ **Protocol** – ADSL protocol used to provide the connection
- ◆ **Data Path** – Fast or Interleave mode (depending on the DSLAM)
- ◆ **Upstream** - Displays upstream data bit rate in Kbps
- ◆ **Downstream** - Displays downstream data bit rate in Kbps

The lighted indicator indicates the connection status by its color.

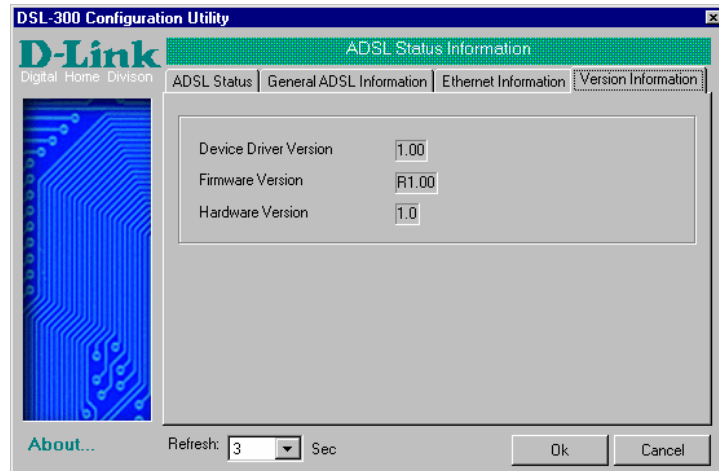
- ◆ **Red light** – not connected
- ◆ **Yellow/Black flashing light** – connecting
- ◆ **Green light** - connected



The *General ADSL Information* menu displays information on packets received and transmitted via the ADSL line as well as the ADSL settings. This is where you can change the VCI and VPI values, as described in the previous section.



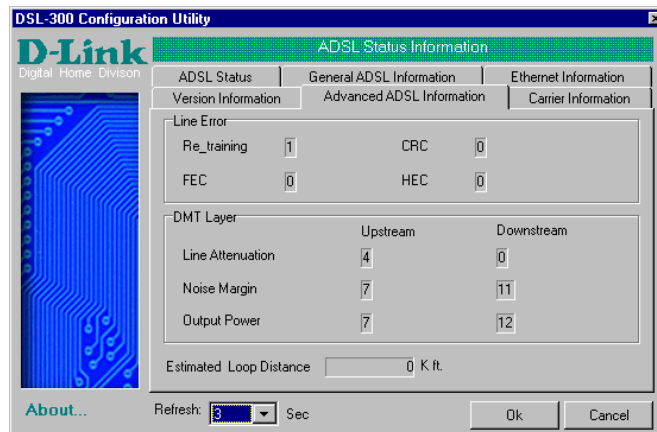
The *Ethernet Information* menu provides information about packets received and transmitted via the Ethernet interface.



The *Version Information* menu lists the current device driver, firmware version and hardware version.

Advanced Diagnostics

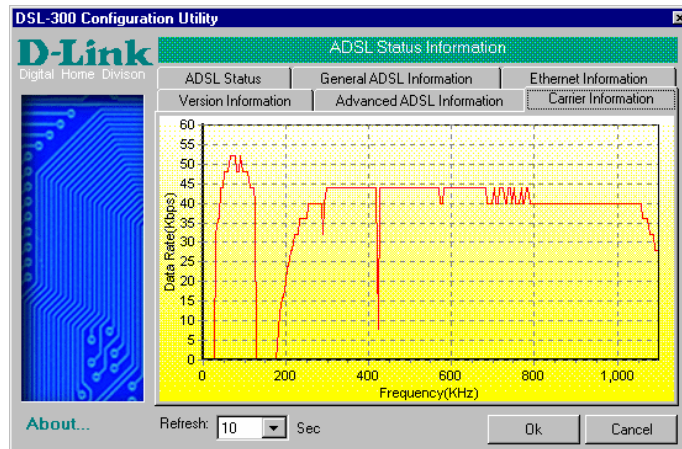
To view the advanced diagnostics menus available with the configuration utility depress CTRL + V while the utility is displayed.



The *Advanced ADSL Information* menu lists information about errors, signal characteristics and loop distance. The data provided in the Advanced ADSL Information window includes:

- ◆ Re_training – number of attempts to establish the ADSL connection

- ◆ CRC – Cyclic Redundancy Checking, number of CRC errors since ADSL connection established
- ◆ FEC – Forward Error Correction, number of FEC errors since ADSL connection established
- ◆ HEC – Header Error Checking, number of HEC errors since ADSL connection established
- ◆ Line Attenuation – measured in dB
- ◆ Noise Margin – measured in dB
- ◆ Output Power – measured in dBm



The *Carrier Information* menu displays the frequency distribution of the upstream and downstream bandwidth. The upstream portion occupies the lower frequency block.

Factory Reset

The Modem can be reset to the factory default settings using the reset button located on the rear panel. To reset the Modem, gently depress the reset button with a paper clip while the unit is powered on.



Technical Specifications

General	
Standards:	ITU G.992.1 (G.dmt) Annex A ITU G.992.2 (G.lite) Annex A ITU G.994.1 (G.Hs) ANSI T1.413 (Issue 2) IEEE 802.3 IEEE 802.3u IEEE 802.1d RFC 2684 (displaces RFC 1483) Supports RFC 1213 (MIB II for IP)
Data Transfer Rate:	G.dmt full rate: Downstream up to 8 Mbps Upstream up to 640 Kbps G.lite: Downstream up to 1.5 Mbps Upstream up to 512 Kbps
Media Interface Exchange:	RJ-11 port ADSL telephone line connection RJ-45 port for 10/100BASE-TX Ethernet connection RJ-14 port for console serial connection

Physical & Environmental	
DC inputs:	Input: 100V ~ 240V AC 50 ~ 60Hz
Power Adapter:	Output: 7.5V DC 1.5A
Power Consumption:	10 Watts (Max)
Operating Temperature:	5° to 40° C (41° - 104° F)
Operating Humidity:	5 to 95% (non-condensing)
Storage Temperature:	-20° to 70° C
Dimensions:	176 mm x 135 mm x 27.2 mm
Weight:	360 gm
EMI:	FCC Class B CE
Safety:	CSA

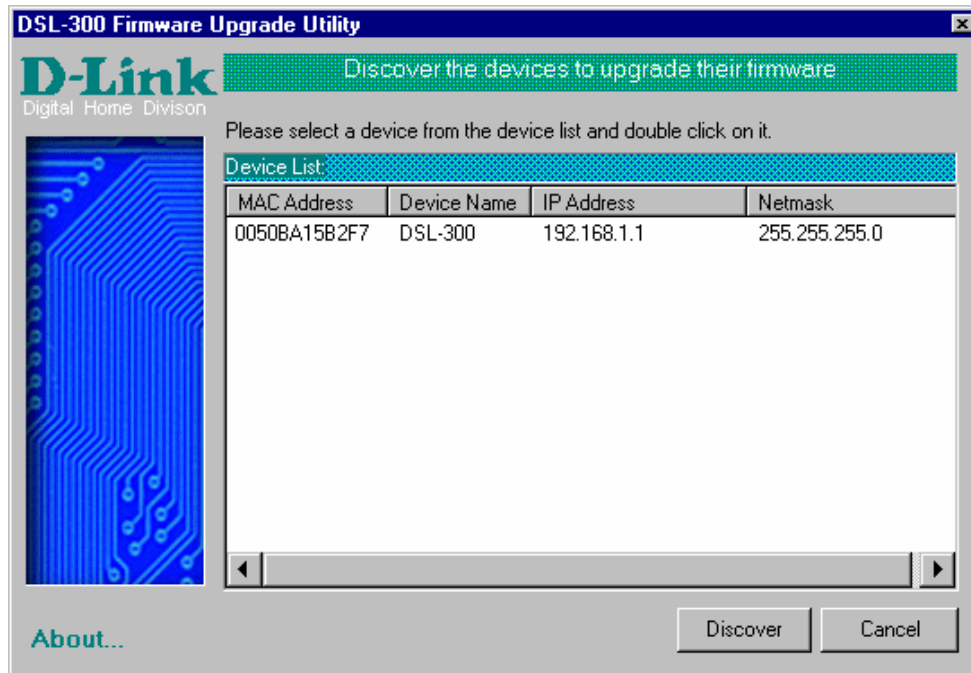
B

DSL-300G Firmware Upgrade Utility

You can update system firmware using the DSL-300G Firmware Upgrade Utility. To upgrade the Modem's firmware you must have installed this software on the PC you wish to use for this purpose. Install the utility by clicking the self-executing file **setup.exe** located on the Installation CD-ROM. It will be installed automatically. It is recommended that the PC be directly connected to the Modem using a straight-through cable, however you may upgrade it through the LAN from a remote host.

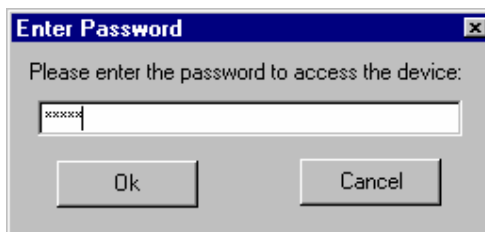
You also need to download the latest firmware version file from the D-Link web site to the PC on which you will use the Upgrade Utility. Instructions for downloading the firmware are located on the web site at www.dlink.com.

To launch the DSL-300G Firmware Upgrade Utility, click on the icon. Allow a few moments for the software to discover the Modem on the network. After the discovery phase the following window will appear. You will see all the DSL-300G Modems on your network. You can identify individual devices by either its IP address or its MAC address. Select the device you wish to upgrade by double clicking on it.



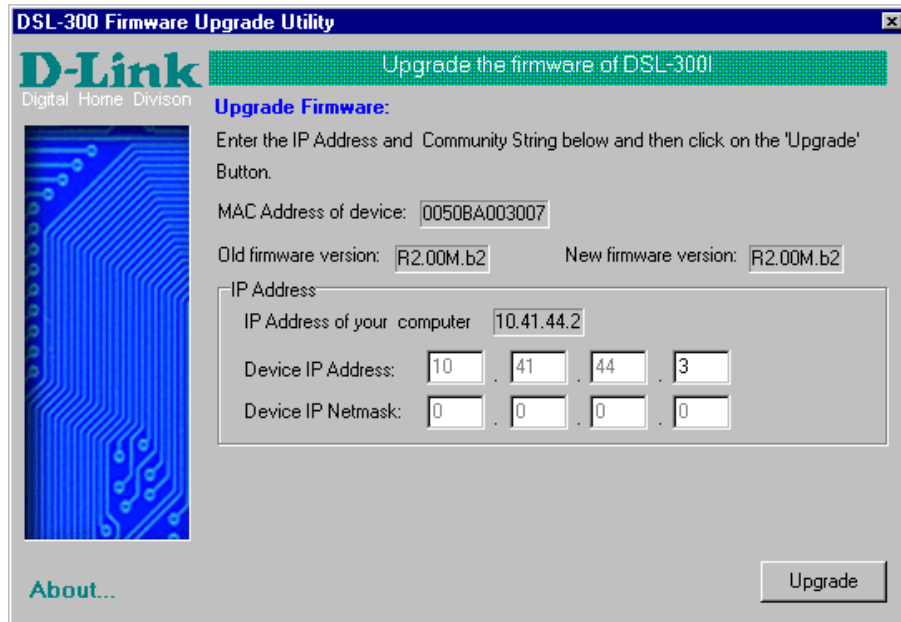
When you select a Modem to upgrade you will be prompted for a password. The default password is **admin**. If you want to change the password, you can change it using the console manager interface as described in Appendix B.

Enter the password and click **OK**.



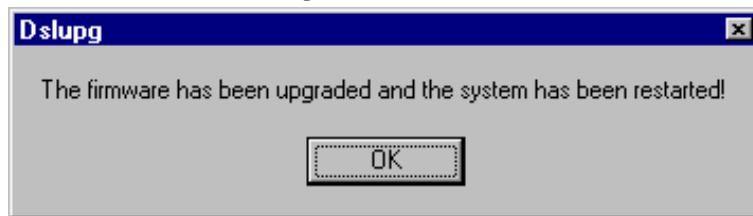
In the new window you will see the MAC address of the Modem and the IP address of the PC you are using. The PC and the Modem must be on the same subnet for the upgrade to be completed. The upgrade utility will suggest a new IP address to be temporarily assigned to the device during the firmware upgrade procedure.

Check the suggested IP address listed for the Modem to be sure that it does not conflict with any existing IP addresses on your network. To change the temporary IP address of the Modem, type in an available IP address in the space provided. You should change only the host portion of the address.



To upload the new firmware to the selected Modem click the 'Upgrade' button. The utility will automatically load the new firmware. During the upgrade process it is important that you allow the entire file to load onto the device. Do not turn off the Modem while the flash memory is being updated. A warning will appear during the upgrade reminding you not to power off the device.

When the new firmware has been successfully loaded a new window will inform you of the upgrade and tell you that the Modem has been restarted. Click OK to proceed.



D-Link® Offices

Australia	D-Link Australasia Unit 16, 390 Eastern Valley Way, Roseville, NSW 2069 Australia TEL: 61-2-9417-7100 FAX: 61-2-9417-1077 TOLL FREE (Australia): 1800-177100 TOLL FREE (New Zealand): 0800-900900 URL: www.dlink.com.au E-MAIL: support@dlink.com.au & info@dlink.com.au
Canada	D-Link Canada 2180 Winston Park Drive, Oakville, Ontario, L6H 5W1 Canada TEL: 1-905-829-5033 FAX: 1-905-829-5095 BBS: 1-965-279-8732 TOLL FREE: 1-800-354-6522 URL: www.dlink.ca FTP: ftp.dlinknet.com E-MAIL: techsup@dlink.ca
Chile	D-Link South America Isidora Goyechea 2934 of 702, Las Condes, Santiago, Chile, S. A. TEL: 56-2-232-3185 FAX: 56-2-232-0923 URL: www.dlink.cl E-MAIL: ccassu@dlink.cl & tsilva@dlink.cl
China	D-Link China 2F, Sigma Building, 49 Zhichun Road, Haidan District, 100080 Beijing, China TEL: 86-10-88097777 FAX: 86-10-88096789 URL: www.dlink.com.cn E-MAIL: liweii@digitalchina.com.cn
Denmark	D-Link Denmark Naverland 2, DK-2600 Glostrup, Copenhagen, Denmark TEL: 45-43-969040 FAX: 45-43-424347 URL: www.dlink.dk E-MAIL: info@dlink.dk
Egypt	D-Link Middle East 7 Assem Ebn Sabet Street, Heliopolis, Cairo, Egypt TEL: 20-2-635-6176 FAX: 20-2-635-6192 URL: www.dlink-me.com E-MAIL: support@dlink-me.com & fateen@dlink-me.com
Finland	D-Link Finland Thlli-ja Pakkahuone Katajanokanlaituri 5, FIN- 00160 Helsinki TEL: 358-9-622-91660 FAX: 358-9-622-91661 URL: www.dlink-fi.com
France	D-Link France Le Florilege #2, Allee de la Fresnerie, 78330 Fontenay le Fleury, France TEL: 33-1-3023-8688 FAX: 33-1-3023-8689 URL: www.dlink-france.fr E-MAIL: info@dlink-france.fr
Germany	D-Link Central Europe/D-Link Deutschland GmbH Schwalbacher Strasse 74, D-65760 Eschborn, Germany TEL: 49-6196-77990 FAX: 49-6196-7799300 URL: www.dlink.de BBS: 49-(0) 6192-971199 (analog) BBS: 49-(0) 6192-971198 (ISDN) INFO: 00800-7250-0000 (toll free) HELP: 00800-7250-4000 (toll free) REPAIR: 00800-7250-8000 E-MAIL: info@dlink.de
India	D-Link India Plot No.5, Kurla-Bandra Complex Rd., Off Cst Rd., Santacruz (E), Bombay, 400 098 India TEL: 91-22-652-6696 FAX: 91-22-652-8914 URL: www.dlink-india.com E-MAIL: service@dlink.india.com
Italy	D-Link Mediterraneo Srl/D-Link Italia Via Nino Bonnet n. 6/b, 20154, Milano, Italy TEL: 39-02-2900-0676 FAX: 39-02-2900-1723 URL: www.dlink.it E-MAIL: info@dlink.it
Japan	D-Link Japan 10F, 8-8-15 Nishi-Gotanda, Shinagawa-ku, Tokyo 141, Japan TEL: 81-3-5434-9678 FAX: 81-3-5434-9868 URL: www.d-link.co.jp E-MAIL: kida@d-link.co.jp
Netherlands	D-Link Benelux Fellenoord 1305611 ZB, Eindhoven, the Netherlands TEL: 31-40-2668713 FAX: 31-40-2668666 URL: www.d-link-benelux.nl
Norway	D-Link Norway Waldemar Thranesgt. 77, 0175 Oslo, Norway TEL: 47-22-991890 FAX: 47-22-207039

Russia **D-Link Russia**
Michurinski Prospekt 49, 117607 Moscow, Russia
TEL: 7-095-737-3389 & 7-095-737-3492 FAX: 7-095-737-3390 URL: www.dlink.ru
E-MAIL: vl@dlink.ru

Singapore **D-Link International**
1 International Business Park, #03-12 The Synergy, Singapore 609917
TEL: 65-774-6233 FAX: 65-774-6322 E-MAIL: info@dlink.com.sg URL: www.dlink-intl.com

South Africa **D-Link South Africa**
102 – 106 Witch hazel Avenue, Einstein Park 2, Block B, Highveld Technopark,
Centurion, South Africa
TEL: 27 (0) 12-665-2165 FAX: 27 (0) 12-665-2186 URL: www.d-link.co.za
E-MAIL: attie@d-link.co.za

Spain **D-Link Spain**
Gran Via de Carlos III, 843º Edificio Trade, 08028 Barcelona, Spain
TEL: 34 93 4965751 FAX: 34 93 4965701 URL: www.dlinkiberia.es

Sweden **D-Link Sweden**
P. O. Box 15036, S-167 15 Bromma, Sweden
TEL: 46-(0) 8-564-61900 FAX: 46-(0) 8-564-61901 E-MAIL: info@dlink.se URL: www.dlink.se

Taiwan **D-Link Taiwan**
2F, No. 119 Pao-Chung Rd, Hsin-Tien, Taipei, Taiwan
TEL: 886-2-2910-2626 FAX: 886-2-2910-1515 URL: www.dlinktw.com.tw
E-MAIL: dssqa@tsc.dlinktw.com.tw

U.K. **D-Link Europe**
4th Floor, Merit House, Edgware Road, Colindale, London NW9 5AB United Kingdom
TEL: 44 (0) 20-8731-5555 FAX: 44 (0) 20-8731-5511 BBS: 44 (0) 181-235-5511
URL: www.dlink.co.uk E-MAIL: info@dlink.co.uk

U.S.A. **D-Link U.S.A.**
53 Discovery Drive, Irvine, CA 92618, USA
TEL: 1-949-788-0805 FAX: 1-949-753-7033 BBS: 1-949-455-1779 & 1-949-455-9616
INFO: 1-800-326-1688 URL: www.dlink.com E-MAIL: tech@dlink.com & support@dlink.com

Registration Card

Print, type or use block letters.

Your name: Mr./Ms _____
 Organization: _____ Dept. _____
 Your title at organization: _____
 Telephone: _____ Fax: _____
 Organization's full address: _____

 Country: _____
 Date of purchase (Month/Day/Year): _____

Product Model	Product Serial No.	* Product installed in type of computer (e.g., Compaq 486)	* Product installed in computer serial No.

(* Applies to adapters only)

Product was purchased from:

Reseller's name: _____
 Telephone: _____ Fax: _____
 Reseller's full address: _____

Answers to the following questions help us to support your product:

1. Where and how will the product primarily be used?

Home Office Travel Company Business Home Business Personal Use

2. How many employees work at installation site?

1 employee 2-9 10-49 50-99 100-499 500-999 1000 or more

3. What network protocol(s) does your organization use?

XNS/IPX TCP/IP DECnet Others _____

4. What network operating system(s) does your organization use?

D-Link LANsmart Novell NetWare NetWare Lite SCO Unix/Xenix PC NFS 3Com 3+Open
Banyan Vines DECnet Pathwork Windows NT Windows NTAS Windows '95
Others _____

5. What network management program does your organization use?

D-View HP OpenView/Windows HP OpenView/Unix SunNet Manager Novell NMS
NetView 6000 Others _____

6. What network medium/media does your organization use?

Fiber-optics Thick coax Ethernet Thin coax Ethernet 10/100BASE-TX UTP/STP
100BASE-TX 100BASE-T4 100VGAnyLAN Others _____

7. What applications are used on your network?

Desktop publishing Spreadsheet Word processing CAD/CAM
Database management Accounting Others _____

8. What category best describes your company?

Aerospace Engineering Education Finance Hospital Legal Insurance/Real Estate Manufacturing
Retail/Chainstore/Wholesale Government Transportation/Utilities/Communication VAR
System house/company Other _____

9. Would you recommend your D-Link product to a friend?

Yes No Don't know yet

10. Your comments on this product?

PLEASE
PLACE STAMP
HERE

TO: _____

D-Link®